

# Lo Profile Range

LP100/LP120/LP150



The Manrose Lo Profile fan has a unique design which enables it to fit unobtrusively into any wall or ceiling. Its flush fitting allows the fan to blend into the decor of the room.

- Long life motor.
- Only 10mm profile.
- Easy to install & maintain.
- Designed for Wall or Ceiling Mounting. Designed to comply with the building regulations on ventilation (F1).
- Available in White and Chrome with Square or Circular Front Covers.
- Quiet and efficient, the Lo Profile Fans have extraction rates of 85m<sup>3</sup>/hr or 23 litres per second
- 130m<sup>3</sup>/hr or 36 litres per second - 120mm (5") 230m<sup>3</sup>/hr or 64 litres per second - 150mm (6").

## Technical Details

**Cat. No.**                      **Product type**  
**Square Front Cover**

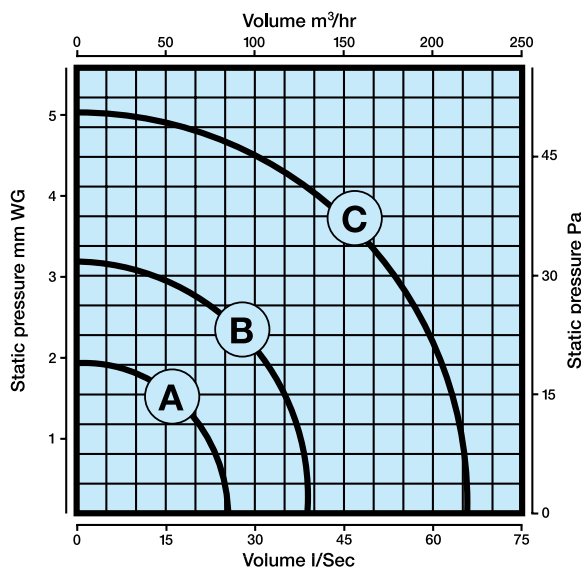
- LP100/120/150SSW** Low Profile Standard model for remote switching - White
- LP100/120/150SSC** Low Profile Standard model for remote switching - Chrome
- LP100/120/150STW** Low Profile Timer model incorporating integral adjustable electronic timer (1-20 mins) - White
- LP100/120/150STC** Low Profile Timer model incorporating integral adjustable electronic timer (1-20 mins) - Chrome
- LP100/120/150SLVW** Low Profile STD (low voltage) - White
- LP100/120/150SLVC** Low Profile STD (low voltage) - Chrome

**CIRCULAR Front Cover**

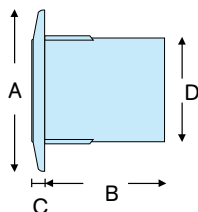
- LP100/120/150CSW** Low Profile Standard model for remote switching - White
- LP100/120/150CSC** Low Profile Standard model for remote switching - Chrome
- LP100/120/150CTW** Low Profile Timer model incorporating integral adjustable electronic timer (1-20 mins) - White
- LP100/120/150CTC** Low Profile Timer model incorporating integral adjustable electronic timer (1-20 mins) - Chrome
- LP100/120/150CLVW** Low Profile STD (low voltage) - White
- LP100/120/150CLVC** Low Profile STD (low voltage) - Chrome

### Performance Graph

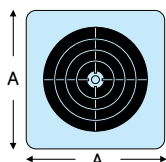
- (A) LP100 Series 85m<sup>3</sup>/hr, 23 litres per second
- (B) LP120 Series 130m<sup>3</sup>/hr, 36 litres per second
- (C) LP150 Series 230m<sup>3</sup>/hr, 64 litres per second



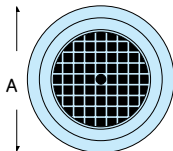
**Dimensions**  
**LP100/120/150 Series**  
**For the Circular & Square Grille**



**Dimensions**  
**LP100/120/150S Series**  
**Square Grille**



**Dimensions**  
**LP100/120/150C Series**  
**Circular Grille**



### Packaging

In orders of 10, for packaging dimensions contact our technical department.

### Installation

Designed for wall or ceiling mounting through either 100mm(4"), 120mm(5"), 150mm(6") diameter flexible or rigid pipes or Manrose low profile, flat channel ducting systems.

### Electrical

220-240V - AC. 50Hz Single phase consuming 15 watts (100mm) and 25 watts (120/150mm). These fans are double insulated and do not require an earth. All wiring must comply with current IEE regulations. A double pole isolating switch, having a contact separation of at least 3mm in all poles, must be used with a 3 amp fuse fitted. The fan must not be accessible to a person using either the shower or bath and mounted a minimum of 1.8 metres from the floor.

### Additional Data

#### 100mm (4") Range

Maximum pressure: 20 p.a.  
 Fan speed: 2400 r.p.m.  
 Sound volume: 41.0 dB(A)  
 Maximum operating temperature: 40°C

#### 120mm (5") Range

Maximum pressure: 35 p.a.  
 Fan speed: 2000 r.p.m.  
 Sound volume: 41.0 dB(A)  
 Maximum operating temperature: 40°C

#### 150mm (6") Range

Maximum pressure: 50 p.a.  
 Fan speed: 2400 r.p.m.  
 Sound volume: 40.0 dB(A)  
 Maximum operating temperature: 40°C

### Dimensions (mm)

PRODUCT	A	B	C	D
<b>LP100S</b>	140	100	10	98Ø
<b>LP100C</b>	140Ø	100	10	98Ø
<b>LP120S</b>	161	122	10	118Ø
<b>LP120C</b>	165Ø	122	10	118Ø
<b>LP150S</b>	191	122	10	150Ø
<b>LP150C</b>	198Ø	122	10	150Ø